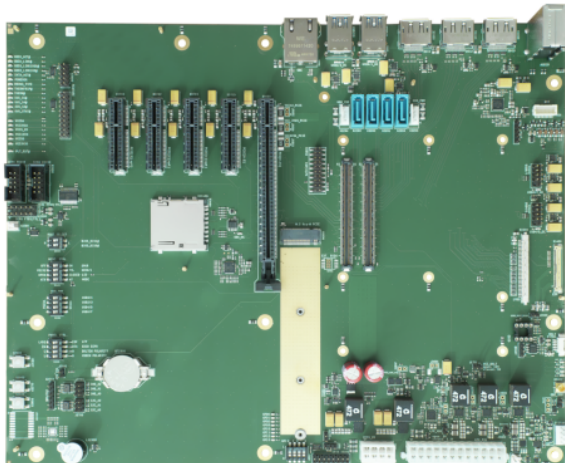


## TRIA C6-MB-EV4

COM Express™ Type 6 Carrier Board

305 x 244



⚡ N.A

🌡️ 0 +60

COM  Express



## Highlights

- Three PCI Express® x1 slots shared with PCIe x4 slot
- One PCI Express® x16 PEG slot
- One M.2 Key-M Slot
- Four SATA connectors
- Four USB 3.0/2.0 connectors
- Four USB 2.0 pin header
- Three DisplayPort connectors
- LVDS interface on JILI30 connector
- Embedded DisplayPort connector
- VGA pin header
- Audio codec; three audio jacks and SPDIF
- LAN interface
- SD Memory Card Socket
- Power supply via ATX connector or wide input
- Extension connector for eSPI and LPC
- POST code display and dual RS232 on optional module
- ATX form factor

# COM Express Type 6



## Technical Data

<b>Technology</b>	COM Express Type 6 Carrier
<b>Formfactor</b>	ATX
<b>Storage Interfaces</b>	4x SATA connector SD card socket 1x M.2-Slot (Key ID M), type 2242/2280/22110, PCIe x4 Gen 3/4  Feature availability depending on installed module type. Please consult the product documentation for details.
<b>USB</b>	4x USB 3.0/2.0 on I/O shield 4x USB 2.0 on pin headers  Feature availability depending on installed module type. Please consult the product documentation for details.
<b>Serial Interfaces</b>	2x serial port on pin header  Feature availability depending on installed module type. Please consult the product documentation for details.
<b>Bus Interfaces</b>	1x PCI Express x4 slots 3x PCI Express x1 slots shared with the PCIe x4 slot 1x PCI Express x16 (PEG) slot  Feature availability depending on installed module type. Please consult the product documentation for details.
<b>Display Interfaces</b>	VGA interface (Pin Header) LVDS interface (JLI130) eDP connector (40pin) 3x DisplayPort receptacle, DP++ capable  Feature availability depending on installed module type. Please consult the product documentation for details.
<b>Network Interface</b>	1x 1GbE / 2.5GbE from COM Express module  Feature availability depending on installed module type. Please consult the product documentation for details.
<b>Audio Interface</b>	High-definition digital audio codec Line In / Line Out / Mic S/PDIF on pin header
<b>Miscellaneous</b>	Pin header for GPIOs shared with SD/Card eSPI/LPC pin header Optional POST code display on module Feature connector 4-pin fan connector PWM controlled RTC battery, CR2032
<b>Feature Highlights</b>	Versatile carrier board for evaluation and prototyping
<b>OS Support</b>	BSP ( for onboard devices ) for Windows and Linux Feature availability depending on installed module type. Please consult the product documentation for details.
<b>Power Requirement</b>	Standard 24 pin ATX power and additional ATX 12V connector (wide input 8.5V to 20V)
<b>Environment</b>	Ambient Temperature 0° ... +60°C (operating), -25° ... 85°C (storage) Humidity 20 ... 80% (operating, non-condensing), 5 ... 95% (storage, non-condensing)
<b>Dimensions</b>	305 x 244

Technical Data for TRIA C6-MB-EV4

# COM Express Type 6



## Order Reference

Order No.	Description	Reference	Status*
111650	COM Express Type 6 Evaluation Carrier Board with various PCI Express x1, x4 and x16 slots, USB 3.0/2.0, GbE, M.2, SD card socket, SATA, DisplayPort, LVDS, eDP, VGA, HD audio interfaces; ATX power connector. Dimensions: 305 x 244 mm (ATX form factor)	MSC C6-MB-EV4 PCBFTX	PV
111163	Extension module for MSC C6-MB-EV4/EV4M, with LPC interface, dual RS232, POST code display; Nuovoton Super I/O.	MSC C6-MB-EV-LPC-001 PCBFTX	PV

Ordering Information for TRIA C6-MB-EV4

\*PV = Preferred variant; OR = on Request (in OEM quantities only)

## Accessories

### Display Kits

Order No.	Description	Reference
78879	Displaykit suitable for all COM Carrier Boards and all COM Starterkits. Comprises 10.1" WVGA LCD with PCAP Touch Sensor and Touch Controller. Includes all cables required to connect to COM Carrier Boards (LVDS, B/L & Touch).	MSC DIS-AM1280800-101-KIT BRDFTX

10.1" Display kit

Order No.	Description	Reference
78880	Displaykit suitable for all COM Carrier Boards and all COM Starterkits. Comprises 12.1" WVGA LCD with PCAP Touch Sensor and Touch Controller. Includes all cables required to connect to COM Carrier Boards (LVDS, B/L & Touch)	MSC DIS-AM1280800-121-KIT BRDFTX

12.1" Display kit

Order No.	Description	Reference
81871	Displaykit suitable for all COM Carrier Boards and all COM Starterkits. Comprises 5.0" WVGA LCD with PCAP Touch Sensor and Touch Controller. Includes all cables required to connect to COM Carrier Boards (LVDS, B/L & Touch)	MSC DIS-AM800480-050-KIT BRDFTX

5.0" Display kit

Order No.	Description	Reference
78911	Displaykit suitable for all COM Carrier Boards and all COM Starterkits. Comprises 7.0" WVGA LCD with PCAP Touch Sensor and Touch Controller. Includes all cables required to connect to COM Carrier Boards (LVDS, B/L & Touch)	MSC DIS-AM800480-070-KIT BRDFTX

7" Display kit

Tria Technologies GmbH  
Industriestr. 16  
76297 Stutensee  
info@tria-technologies.com  
tria-technologies.com

Copyright © 2024 Tria Technologies GmbH. All data is for information purposes only and is subject to change without notice. No guarantee for legal purposes is implied. Information in this document has been carefully checked, however, no responsibility for inaccuracies has to be assumed. All brand or product names may be trademarks and property of their respective owners.